



MAXI-PLEAT CO

PLEATED FILTER FOR SLIGHT ODOR CONTROL

Reduces odor

Double media filter design;

ASHRAE 52.2 (MERV 8) tested;

Absorption of toluene; tested

Packed in bags of 2 per box

UL class 2

Available 1, 2, 4, 6 et 12 inches



DESCRIPTION - CONSTRUCTION - SPECIFICATION

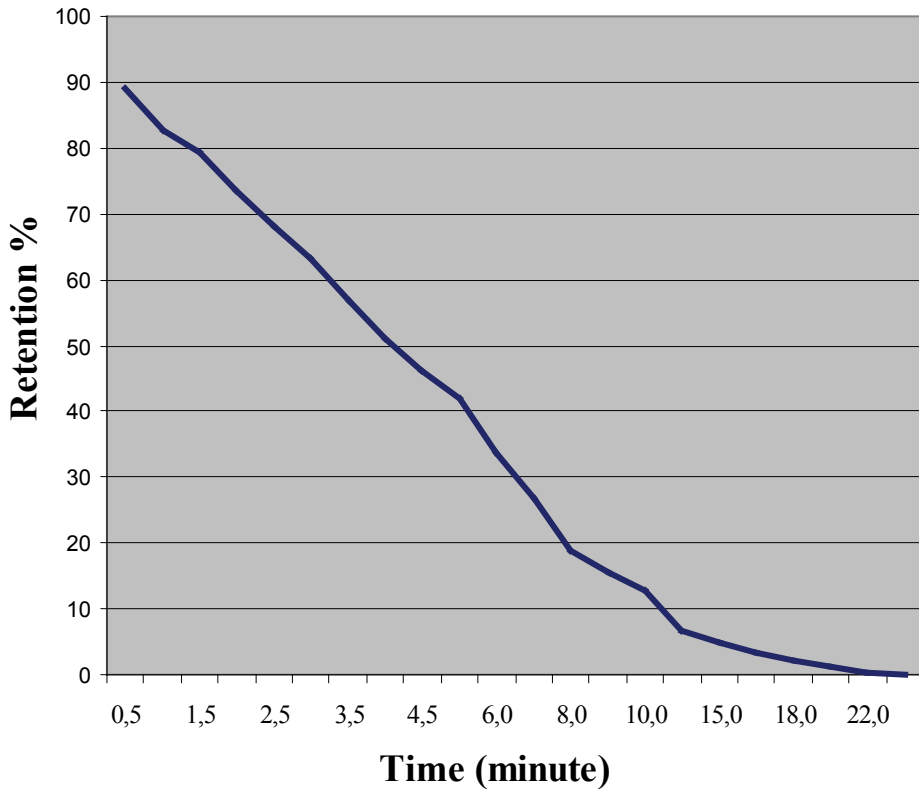
CO Filters deliver a minimum performance of 30-35% (52.1-1992) MERV 8 Rating per ASHRAE 52.2

The **CO** filter is constructed from a rigid fire retardant beverage board to give it outstanding strength and resistance in tough operating conditions. The filtering media is glued to the frame sides thus eliminating any possibility of air by-passing the filter. Each pleat point is glued to the die cut frame so that the pleats will not deform over the entire life of the filter. The 4 inch deep pleats have additional cardboard fingers inserted and glued between each pleat for even greater strength. The frame is offered in galvanized steel only in 6 and 12 inches. On demand, they can be available with 13/16" header.

The filtering **media** is constructed of synthetic material MERV 8 at air intake and activated carbon membrane and regular membrane on the downstream. Under part 2 of the ISO TS 1155-2 gaz tests filtration. The Filtration Lab **CO** has a toluene absorption of 25 000 mg/m2

Nominal size	Toluene Absorption* (mg/m2)	Carbon Loading (g/m2)	Pressure (in. H2O)	MERV	E1 (% Avg)	E2 (% Avg)	E3 (% Avg)
24x24x2	25 000	25	0,35	8	17	51	71

Toluene retention vs Time



Time (Min)	% Ret.
0,5	89
1,0	83
1,5	79
2,0	74
2,5	68
3,0	63
3,5	57
4,0	51
4,5	46
5,0	42
6,0	34
7,0	27
8,0	19
9,0	16
10,0	13
12,0	7
15,0	5
16,0	3
18,0	2
20,0	1
22,0	0
24,0	0

International standard advances to test the media efficiency in gaseous contaminants elimination. Several reference gaz can be used. Toluene is the most popular for concentration around 80 PPM at 60 FPM. As the picture you will see penetration is eliminated by the time it's used.

These filters are available in various sizes.

The odor controle offers elevated filtering performance to reduce gases that also contributes to the quality of the air.

